



# Comprehensive Leak Survey Programs

Water Conservation Specialists  
Established 1979

Leak Surveys • Leak Pinpointing • Utility Location • Hydrant Flow Testing • Water Main Flushing  
Valve Assessment Programs • GPS-GIS Mapping Surveys • Location Equipment Sales and Expert Training



## Reduce Your Water Losses and Save Money

Whether you have 1 mile or 1,000 miles of water main, ATS has a Leak Survey to Fit Your Needs.

### Custom Tailored Leak Survey Programs

- **System-Wide Leak Surveys:** Survey your entire water distribution system for leaks wherever they may be. Every detected leak in your water system (*including service leaks*) will be accurately pinpointed for repair.
- **Pilot and Targeted Area Leak Surveys:** Survey just an area that's causing you suspicions, or a test section. Many cities survey their oldest or a chronically troubling section of the system. You can add areas as you go.
- **Street Resurfacing Leak Surveys:** Survey those streets that you've designated for resurfacing with an intensified leak survey. Save yourself from the frustration of digging for an old leak under a recently paved street.
- **Emergency Leak Surveys:** This is a very rapidly conducted survey for main breaks that have suddenly put you in a crisis situation. **ATS** can mobilize up to 12 emergency survey crews for you at a moment's notice.
- **On-Site Consultation Services:** **ATS** will consult with you to discuss your needs and available options at no charge. You'll know in advance just what will be needed, so you can develop a solid strategy, time and budget plan.

### Accurate, Cost Effective Leak Surveys

- **ATS Leak Surveys** are conducted during normal daylight hours with your water system in its daily operating condition.
- **ATS** is self-reliant during the survey so your staff is not distracted from their normal duties.
- **ATS** ultrasonically surveys up to 40,000 LF of pipe a day while monitoring every Hydrant, Aux Valve & Mainline Valve for leak sounds.
- Leaks of all sizes and types are electronically pinpointed with a leak correlator, documented and marked in the field.
- Leaks are classified by size and type to help you plan and prioritize repairs.

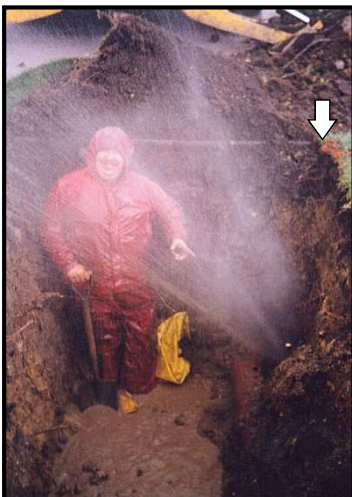


Step 1. Leak Detection



Step 2. Leak Pinpointing

### Leak Survey Pricing Options for Every Water System – Anywhere in the USA



Step 3. Another Perfect Pinpoint!

Note our orange paint mark right above the leak, and the hole that this 156,000 GPD leak bored into the adjacent sewer pipe. **ATS'** 96% accuracy means that your leak will be located right where we mark it.

- **Incentive-Based Proposal:** Our most popular leak survey program offers tremendous value. Only pay for leaks that actually exist in your system. The detection phase is a lump sum charge. Leak pinpointing is charged a flat rate per leak. It's risk free since you won't pay an extra dollar without getting a money saving leak in return. Since we're paid by the leak, the "**Incentive**" is on **ATS** to find as many leaks as possible to get you the largest return on your survey dollars and make the biggest impact on reducing water loss. We're putting our money where our mouth is.
- **All-Inclusive (Lump Sum) Proposal:** One price covers all leak detection and leak pinpointing costs regardless of how leaks exist in your system.
- **Daily T&M Rates:** Surveys and Leak Callouts are available at cost-effective half and full day hourly rates to check a suspect area or leak site.
- **Request Your No-Obligation Leak Survey Budget Quote Today!**

**ASSOCIATED TECHNICAL SERVICES LTD.**  
524 W. Saint Charles Rd, Villa Park, IL 60181  
24-Hour Hot Line (630) 834-1558

[www.ATSLimited.com](http://www.ATSLimited.com)